

Tectus Japan participates in NEXCO East Japan's Accelerator Program "Dorapura Innovation Lab" with Dynamic Map Platform

Chiyoda-ku, Tokyo, 31 Jan 2024 – Tectus Japan, a subsidiary of Swiss-based Tectus Group, marketing and selling Tectus' portfolio of innovative and sustainable construction and engineering technologies, including leading utility mapping solutions powered by Screening Eagle Technologies, proudly announces its participation for the prestigious accelerator program, "Dorapura Innovation Lab", initiated by NEXCO EAST Japan with Dynamic Map Platform.

"Dorapura Innovation Lab" NEXCO East Japan is the program to support companies with new technologies and service ideas with innovative technology and business models and aims to realize next-generation expressway services, revitalize regions, and improve society. This is an accelerator program that aims to create businesses solving various problems.

Tectus Japan distinguished itself in the selection process due to its cutting-edge utility mapping solutions that leverage the powerful Ground Penetrating Radar Array and data processing and Augmented Reality visualisation technologies of Screening Eagle Technologies. Tectus Japan has secured its place among the top 5 selected companies in the program, in collaboration with its strategic partner Dynamic Map Platform.

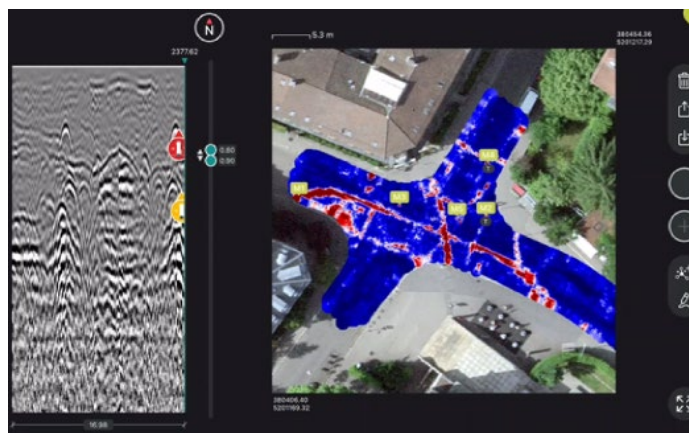
Tectus Japan and Dynamic Map Platform proposed a ground-breaking technology enabled approach aimed at enhancing the efficiency of surveys and inspections of underground buried objects. The project focuses on implementing advanced detection mechanisms for underground objects on roads, service areas (SAs), and parking areas (PAs). Moreover, the visualisation of this data using spatial IDs has been a key aspect of the project, which has been successfully adopted by "Dorapura Innovation Lab".

Tectus Japan is enthusiastic about the joint effort with Dynamic Map Platform and remains committed to the creation of value that contributes to the protection and management of the built world. Powered by Screening Eagle Technologies, Tectus Japan is set to significantly advance the sophistication and efficiency of identifying and managing expressways through what lies beneath, be it infrastructure to protect or risks to identify and mitigate.

"We are honoured to be selected for the 'Dorapura Innovation Lab' program by NEXCO EAST Japan. This recognition reaffirms the impact and potential of our utility mapping solutions in revolutionizing expressway services and underscores the innovative spirit of Tectus Japan," said Koichi Oba, Representative Director and President of Tectus Japan. "In NEXCO EAST, with its

innovation focus and broad reach, and DMP, with its high precision above surface 3D data platform, we have found the ideal partnership and share a vision for a more digitised and proactive approach to capturing and maintaining vital assets.”

The collaboration aims to drive sustainable technologies and elevate the standards of managing underground buried objects, aligning with the overarching theme of the program. Tectus Japan is poised to make significant contributions to the evolution of expressway services in collaboration with NEXCO EAST Japan and fellow participants in the "Dorapura Innovation Lab".



Mapping of underground equipment and scan data (Source: Screening Eagle Singapore Pte Ltd)

For further information, please contact:

Company Name: Tectus Japan

Contact: Hiroki Maruyama, Business Development Director

Email: Hiroki.maruyama@screeningeagle.com

Phone: +81 90 2217 0560



About Tectus Japan

Tectus Japan is a platform for the commercialisation of innovative technologies and carbon efficient solutions that protect and enhance the built environment, with solutions spanning infrastructure inspection, monitoring, and Maintenance, Repair & Retrofit technologies and services in a holistic offering for asset conservation. Powered by Screening Eagle Technologies, Tectus Japan is a leading provider of utility mapping solutions, specializing in innovative technologies that redefine the management of underground buried objects.

Tectus Japan is a subsidiary of Tectus Group, a Swiss family-owned multinational, focused on reducing embodied carbon in construction, real estate, and specialised engineering. Emphasizing CO2-efficient methods, Tectus strives to enhance longevity and asset health, thereby increasing Net Present Value (NPV) and contributing to a responsibly maintained and grown Built World.

With an 80-year global track record of excellence, and 275 completed projects in Japan over the past 60 years, Tectus affiliated BBR Network is recognized as the leading group of specialized engineering contractors in the field of post-tensioning, stay cable, geotechnical and construction engineering in over 40 countries. Synonymous with engineering excellence in the built environment, the BBR Network can provide a full range of services combining innovation focused, centralized technology leadership with dedicated local expertise backed by an international network of strong partners.

BBR VT International is the Technical Headquarters and Business Development Centre of the Global BBR Network and located in Switzerland. Together with the BBR Network members, BBR offers diverse services meeting the needs of local markets while using the very latest best-in-class, internationally approved technologies with thousands of structures built globally using BBR technology.

www.tectusgroup.com

<https://www.bbrnetwork.com/>

About Screening Eagle Technologies

With a mission to protect the built world with software, sensors and data, Swiss/Singaporean Screening Eagle Technologies is transforming the market with a digital-first, connected tech approach, combining intuitive software and powerful portable sensors to deliver reliable data for construction and asset maintenance decisions. Our technology supports field to cloud digitalisation through inspection software and workflow solutions, efficient condition assessment



through real time analytics and collaboration, and delivers asset longevity & NPV for asset owners through data intelligence.

Leveraging 65+ years of innovation expertise with established brands and worldwide standards, and powered by data from intelligent and autonomous inspection, Screening Eagle is committed to realizing its vision of predictive healthcare and that democratizes inspection, promotes asset sustainability, and enhances long-term value for asset owners.

<https://www.screeningeagle.com/>

About Dynamic Map Platform

Dynamic Map Platform is a strategic partner of Tectus Japan, dedicated to advancing the efficiency and accuracy of surveys and inspections through the implementation of cutting-edge technologies. Dynamic Map Platform is leading provider of High-Precision 3D Map Data for diverse industries, including autonomous driving and ADAS.

<https://www.dynamic-maps.co.jp/en/index.html>

About NEXCO EAST Japan

<https://www.e-nexco.co.jp/en/>

[End of Press Release]